



Long Range Planning Work Program

9/20/2024 Planning Commission Retreat

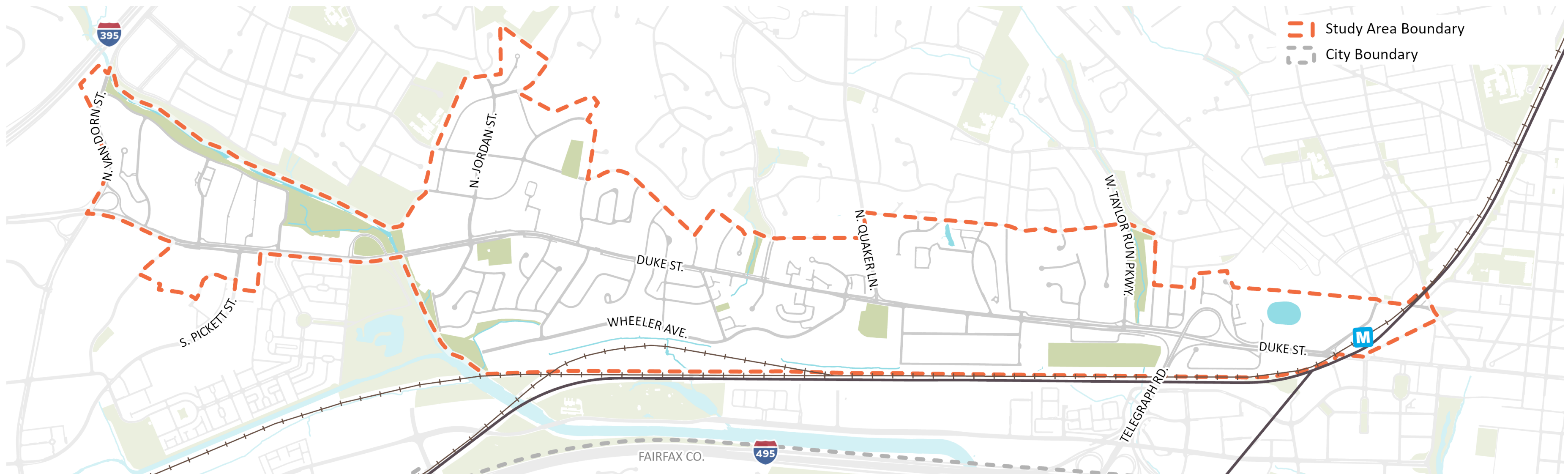




Duke Street Corridor Plan

Draft Plan Area

- ▶ Draft boundaries informed by Duke Street Transitway
 - ▶ KS Metro to Landmark

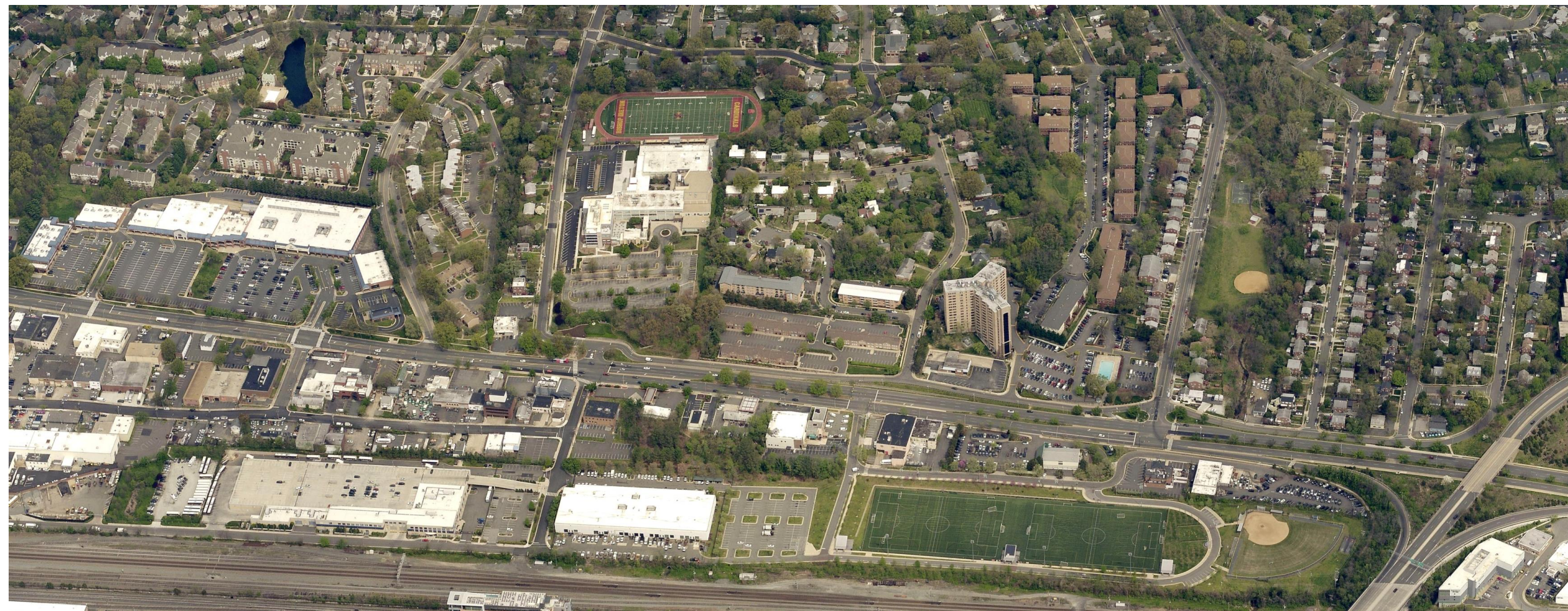


Overview

- ▶ Funded by FTA TOD grant and allocated City match
 - ▶ \$550,000 Federal funding
 - ▶ \$200,000 City funding
- ▶ Topics: Land use, housing affordability, sustainability, mobility, access to open space/recreation, small business retention, stormwater
- ▶ Key sites in the Plan area: Union Station/King Street Metro, VAWC, USPS Distribution, Witter-Wheeler City Campus, ARHA sites
- ▶ Engagement with all members of the community, emphasis on those hard to reach, renters, small business owners

Next Steps

- ▶ Pre-planning work underway
- ▶ Public launch scheduled Q1 2025
- ▶ Anticipated ~18-month process – public hearings Q3-4 2026



Discussion