



City of Alexandria Recreation,
Parks and Cultural Activities

PARK MAINTENANCE PLAN

Division of Park Services

Park Maintenance Plan Update

Presented by Ana Vicinanza, AICP

Park Services Division

Department of Recreation, Parks and Cultural Activities

Benefits of the Park Maintenance Plan

1. Update of RPCA maintenance approach and Levels of Service
2. Focus on proactive maintenance
3. Organizational systemization
4. Communication tool of maintenance standards internally and externally
5. Onboarding tool and system awareness
6. Opportunities for evaluation and adjustments



Witter Field



Angel Park Field

Parks Maintenance Plan Development



1. Parkland and asset inventory
2. Data collection
3. Defining tasks and Level of Service
4. Assigning tasks and Level of Service
5. Draft plan

Proactive Maintenance In Practice



- Routine inspections
- Routine maintenance
- Safety
- Timely repairs
- Built in quality and expectations
- Improved record keeping and analysis of maintenance data

Levels of Service



Washington Way

- **Level 1** – State-of-the-art maintenance applied to a high-quality diverse landscape.
- **Level 2** – High-level maintenance.
- **Level 3** – Moderate-level maintenance
- **Level 4** – Minimum level maintenance.
- **Level 5** – Minimal to no maintenance. Maintenance only occurs for safety considerations.

Levels of Service

Sport Court (Lighted) Maintenance	
Level 1	
High frequency inspections occur five times per week	
Low frequency inspections occur four times per year	
Gate, fence, latch, and crack repairs occur four times per year	
Sweep, brush clean with water, and/or blow courts four times per year	
Repair and replace court equipment four times per year	
Level 2	
High frequency inspections occur three times per week	
Low frequency inspections occur four times per year	
Gate, fence, latch, and crack repairs occur four times per year	
Sweep, brush clean with water, and/or blow courts three times per year	
Repair and replace court equipment three times per year	
Level 3	
High frequency inspections occur two times per week	
Low frequency inspections occur four times per year	
Gate, fence, latch, and crack repairs occur four times per year	
Sweep, brush clean with water, and/or blow courts two times per year	
Repair and replace court equipment two times per year	
Level 4	
High frequency inspections occur one time per week	
Low frequency inspections occur four times per year	
Gate, fence, latch, and crack repairs occur four times per year	
Sweep, brush clean with water, and/or blow courts one time per year	
Repair and replace court equipment one time per year	
Level 5	
High frequency inspections occur one time per week	
Low frequency inspections occur four times per year	
Gate, fence, latch, and crack repairs occur four times per year	
Court is not swept, brushed clean with water, or blown	
Repair and replace court equipment one time per year	

Sport Court (Not Lighted) Maintenance	
Level 1	
High frequency inspections occur five times per week	
Low frequency inspections occur four times per year	
Gate, fence, latch, and crack repairs occur four times per year	
Sweep, brush clean with water, and/or blow courts four times per year	
Repair and replace court equipment four times per year	
Level 2	
High frequency inspections occur three times per week	
Low frequency inspections occur four times per year	
Gate, fence, latch, and crack repairs occur four times per year	
Sweep, brush clean with water, and/or blow courts three times per year	
Repair and replace court equipment three times per year	
Level 3	
High frequency inspections occur two times per week	
Low frequency inspections occur four times per year	
Gate, fence, latch, and crack repairs occur four times per year	
Sweep, brush cleaned with water, and/or blow courts two times per year	
Repair and replace court equipment two times per year	
Level 4	
High frequency inspections occur one time per week	
Low frequency inspections occur four times per year	
Gate, fence, latch, and crack repairs occur four times per year	
Sweep, brush cleaned with water, and/or blow courts one time per year	
Repair and replace court equipment one time per year	
Level 5	
High frequency inspections occur one time per week	
Low frequency inspections occur four times per year	
Gate, fence, latch, and crack repairs occur four times per year	
Court is not swept, brushed cleaned with water, or blown.	
Repair and replace court equipment one time per year	

Levels of Service

Sports Courts

Level of Service 1 (lighted)	Level of Service 3 (not lighted)
Armistead Boothe Park – Basketball	Angel Park - Basketball
Armistead Boothe Park – Tennis (2)	Ben Brenman Park – Volleyball (3)
Carlyle Tennis Court – Tennis (2)	Beverley Park – Traffic Garden
Chinquapin Park – Volleyball	Buchanan Park – Basketball
Chinquapin Park – Tennis (4)	Chambliss Park – Tennis (2)
Ewald Park – Basketball	Colasanto Center – Tennis/Pickleball
Hoof’s Run Greenway/King Street Metro – Basketball	Ewald Park – Traffic Garden
Hoof’s Run Greenway/Oak Street – Tennis	Fort Ward Park – Tennis (2)
Helen Miller/Bernard Hunter Park – Basketball	Founders Park – Volleyball
Lee Recreation Center – Basketball	Four Mile Run Park – Basketball/Futsal
Chinquapin Park – Basketball	Judy Noritake-Guse Park – Bocce
Lee Recreation Center – Tennis (2)	Mount Jefferson Park – Traffic Garden
Potomac Yard Park – Basketball (2)	Potomac Yard Park – Badminton
Eugene Simpson Stadium Park – Basketball	Potomac Yard Park – Tennis (2)
Montgomery Park – Tennis (4)	Potomac Yard Park – Volleyball
Eugene Simpson Stadium Park – Tennis (2)	Powhatan Park – Basketball
William Ramsay Recreation Center – Tennis/Futsal (2)	Powhatan Park – Tennis/Futsal
	Rivergate City Park – Volleyball
	Stevenson Park – Basketball
	William Ramsay Recreation Center – Futsal
	Windmill Hill Park – Basketball
	Windmill Hill Park - Volleyball



Armistead Boothe Park



Park | Link

City of Alexandria, VA

Parks by Amenity

Parks A-Z

1 / 2



Athletic Fields



BBQ Areas



Biking Trails



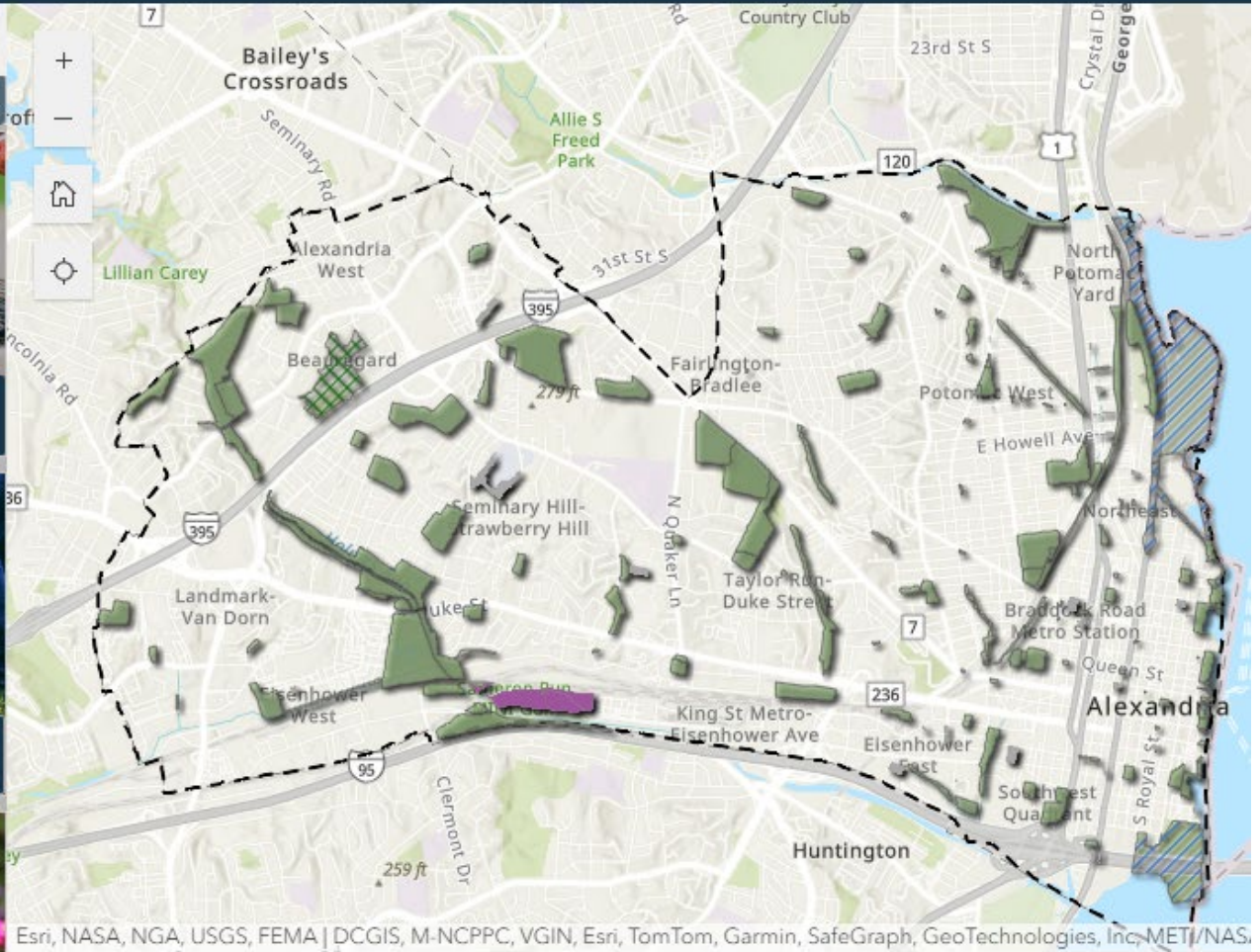
Dog Exercise Areas



Farmers Markets



Gardens & Wooded Areas



Esri, NASA, NGA, USGS, FEMA | DCGIS, M-NCPPC, VGIN, Esri, TomTom, Garmin, SafeGraph, GeoTechnologies, Inc, METI/NAS

Click on a park on the map to view its amenities!

Next Steps

- *Adopt and implement the revised Park Maintenance Plan (Fiscal Year 25)*
 - *Adopted in August 2024*
- *Continue to update parkland and park assets within GIS to include geolocation of all assets with GIS team*
- *Build and implement park maintenance program and implement within Park Services*
- Further identify measures to analyze performance
- *Continued build out of maintenance program and management through Cityworks*





Oronoco Park

Thank you!

