



CITY OF ALEXANDRIA
Recreation, Park and Cultural Activities
Department of Project Implementation

John Ewald Park Improvements Project Update

Park and Recreation Commission
February 20, 2025



Agenda




1	Implementation Process
2	Community Engagement
3	Park Concept Design Options
4	Next Steps
5	Questions/Discussion




John Ewald Park Improvements



 Alexandria Archaeology 0 70 140 280 Feet

Ewald Park
1995 aerial



Ewald Park
2023 aerial

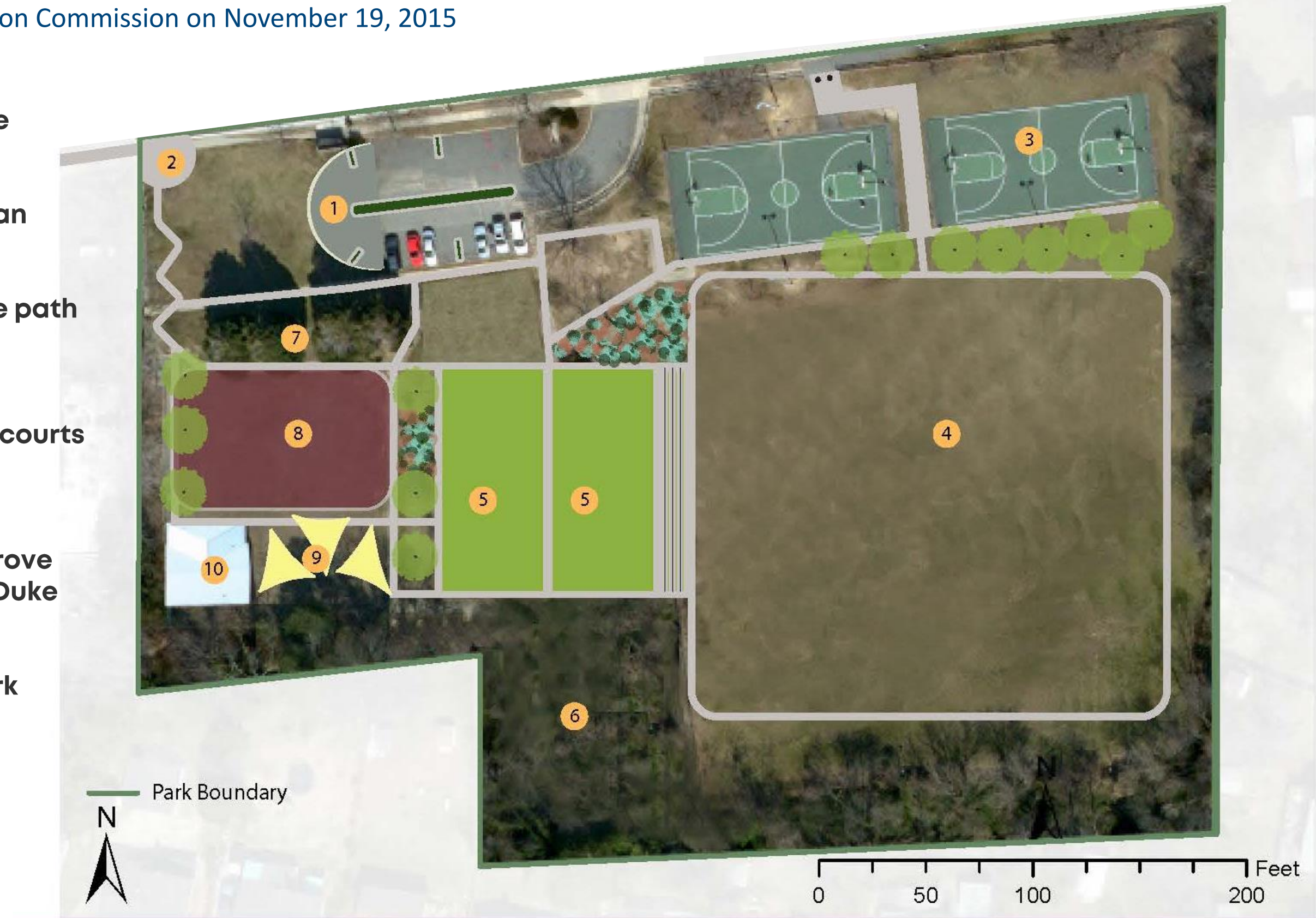
Existing Conditions



2015 Neighborhood Park Improvement Plan Recommendations for John Ewald Park

Endorsed by the Park and Recreation Commission on November 19, 2015

1. Create a turnaround & landscaped median in the parking lot
2. Create pedestrian entrance near Duke St./Jordan intersection
3. Install a second basketball court & maintenance path
4. Renovate the turf & install a walking path
5. Replace the paved blacktop with two multi-use courts
6. Restore the existing playground to forest area
7. Work with Alexandria Police Department to improve park safety, particularly in areas not visible from Duke Street
8. Move the playground to the west side of the park
9. Install shade structure & picnic area
10. Reserve a space for a community building





2018 Neighborhood Park Improvement Plan Amendment: Parkour/Community Matching Fund

Endorsed by the Park and Recreation Commission on November 15, 2018

- ▶ 2018 Community Matching Fund Awardee
- ▶ In 2022, the total fundraised by the community and matched by the City is \$28,965



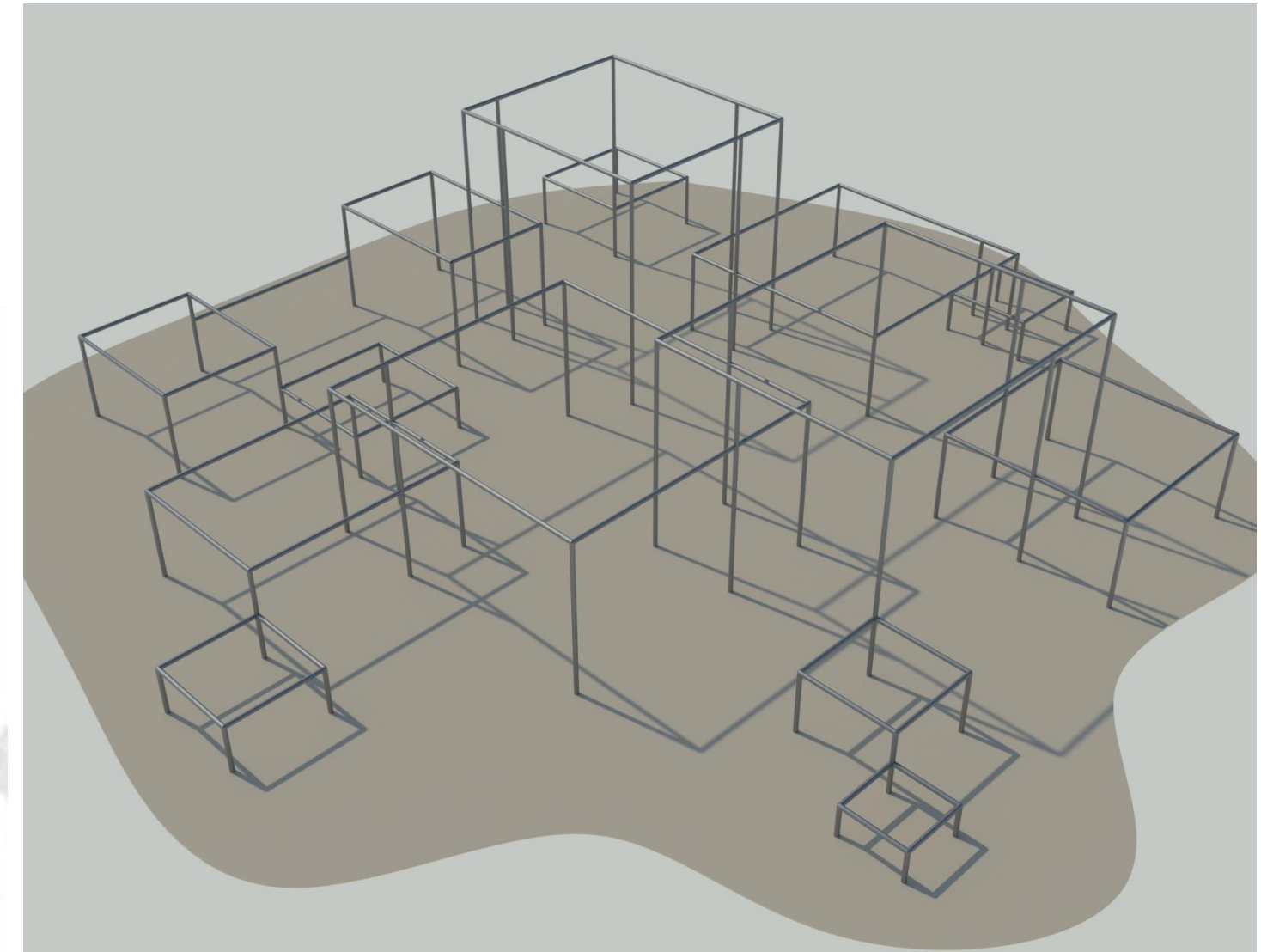
Overview: Parkour

Physical Discipline

Adapting and overcoming obstacles in one's path

Jumping, climbing, swinging, landing, vaulting, balancing, flipping

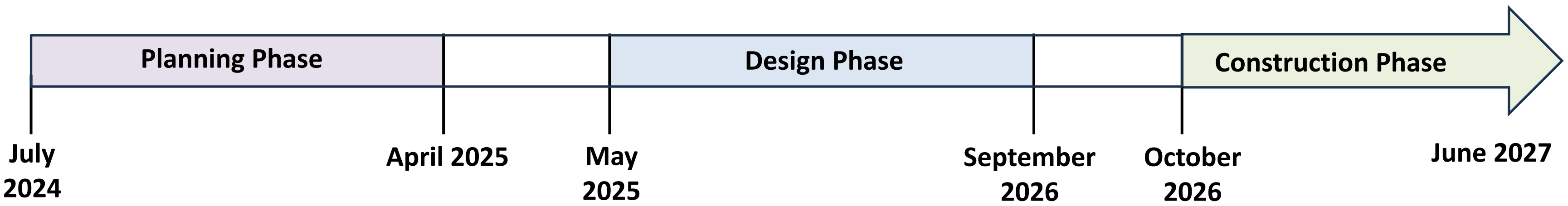
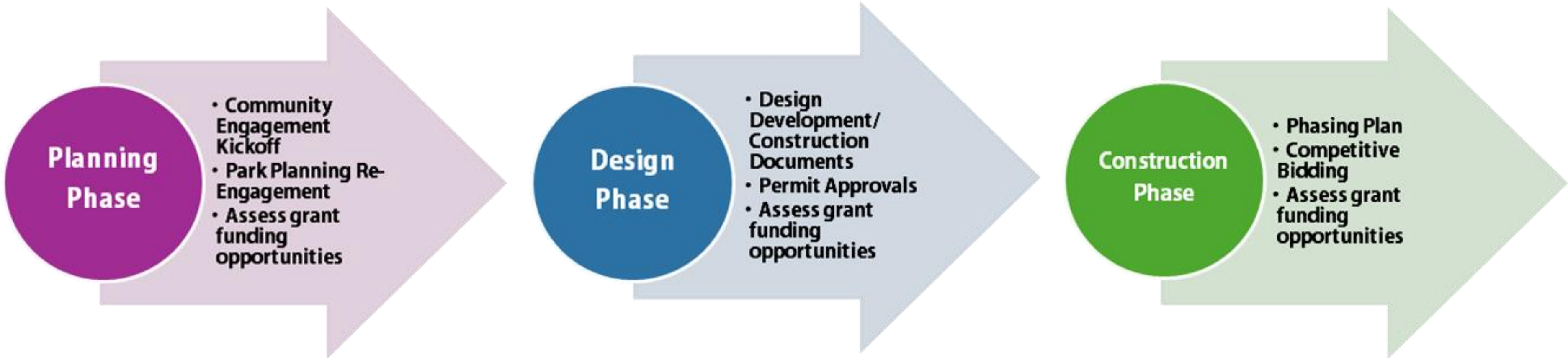
Mastering the mind and body and using both to move creatively, efficiently, and safely



Parkour Design for Ewald Park



John Ewald Park Improvements Implementation Process





John Ewald Park Improvements

Planning Phase

Planning Phase

June 2024 -
April 2025

- Community Engagement Kickoff
- Park Planning Re-Engagement
- Assess grant funding opportunities

- Reaffirm park goals and objectives
- Revisit park improvement recommendations and identify updates
- Assess park equity
- Complete park asset conditions assessment
- Collect site data
- Develop site design concepts
- Develop preliminary cost estimate
- Conduct community engagement
- Coordinate with partner departments
- Seek grant funding opportunities
- Hold Park and Recreation Commission Public Hearing



Community Engagement



Shape the Future of Ewald Park

The City of Alexandria invites your feedback on the redesign of Ewald Park, 4452 Duke St. Help us create a welcoming, accessible, sustainable, and enjoyable space for everyone!

Join us to share your ideas:

- **Park Design Virtual Community Meeting #1**
Wednesday, December 11, 7 p.m. (via Zoom*)
Join to review site data, survey results, and park design concepts. Designs and an online survey will be available on December 11. Recordings will be posted after the meeting.
- **Park Design Community Open House #1**
Monday, December 16, 7 p.m. at Patrick Henry, 4643 Taney Ave.
View design boards, talk with staff, and provide feedback. Light refreshments will be served.
- **Park Design Virtual Community Meeting #2**
Thursday, January 30, 2025, 7 p.m. (via Zoom*)
Staff will present the preferred design and gather feedback. Designs and an online survey will be available January 30. Recordings will be posted after the meeting.
- **Park Design Community Open House #2**
Monday, February 10, 7 p.m. at Patrick Henry, 4643 Taney Ave.
View the preferred design, talk with staff, and share your thoughts. Light refreshments will be served.



SCAN ME

Have Ideas for Ewald Park?

We value your input! Scan the QR code to review upcoming plans, provide your feedback, and *access Zoom links. Your voice helps shape the future!

alexandriava.gov/parks/ewald-project





Fall 2024 Community Survey Survey Goals and Purpose

Shape the Future of Ewald Park

Take this brief survey to identify the improvements our community values most. Together, we can create a park everyone will enjoy and be proud of.

Español አማርኛ عربي

Take the Survey

SCAN ME

Department of Recreation, Parks & Cultural Activities 703-746-5490 alexandriava.gov/rpca/ewald-park-survey

- ▶ Improve survey participation and response rate
- ▶ Verify the original 2015 park goals and recommendations
- ▶ Evaluate revisions to the original 2015 goals and recommendations
- ▶ Identify top priorities for implementation



Ewald Park Concept Options

Scan Here
for the survey



Option 1



Option 2



Online Park Concept Design Survey

Shape the Future of Ewald Park

Scan Here
for the survey



The City of Alexandria invites your feedback on the redesign of John Ewald Park. Take the park design survey and select your preferred design option.
alexandriava.gov/parks/ewald-project

▶ **Survey closed February 12**

▶ **146 completed responses**

▶ **Survey Questions:**

1. The numbered circles in the drawings indicate different park elements for Design Option 1. Please rate the locations of these elements on a scale from 1 to 5, with 1 being the lowest rating and 5 being the highest.
2. The numbered circles in the drawings indicate different park elements for Design Option 2. Please rate the locations of these elements on a scale from 1 to 5, with 1 being the lowest rating and 5 being the highest.
3. Please select your preferred design option and explain what you like and what could be improved.
4. Is there any additional feedback you'd like to share about the design options?
5. How did you find out about this project?
6. To receive updates on future projects, please provide your information below (optional)



Next Steps

- ▶ **Review and synthesize community feedback**
- ▶ **Determine community priorities for implementation**
- ▶ **Develop recommendations for additional community feedback**
- ▶ **Schedule Community Engagement:**
 - ▶ **Patrick Henry Recreation Student Council, Wakefield
Tarleton Civic**
 - ▶ **Spring 2025, TBD: Community Meetings/Pop Ups/Cookout**
 - ▶ **Tentative – May 15, 2025 : Park and Recreation Commission
Public Hearing**



Commission

Questions/Discussion

Project Webpage:

<https://www.alexandriava.gov/parks/project/john-ewald-park-improvements>

Project Team:

Judy Lo, ASLA, PLA

Principal Planner, Capital Development
Department of Recreation, Parks and Cultural Activities
judy.lo@alexandriava.gov, 703.746.5490

Qiaojue Yu

Technical Project Manager
Department of Project Implementation
qiaojue.yu@alexandriava.gov, 703.746.4691

Bethany Znidersic

Division Chief
Department of Recreation, Parks and Cultural Activities
bethany.znidersic@alexandriava.gov, 703.746.5492

