



CITY OF ALEXANDRIA
Recreation, Parks & Cultural Activities

Schuyler Hamilton Jones Skateboard Park

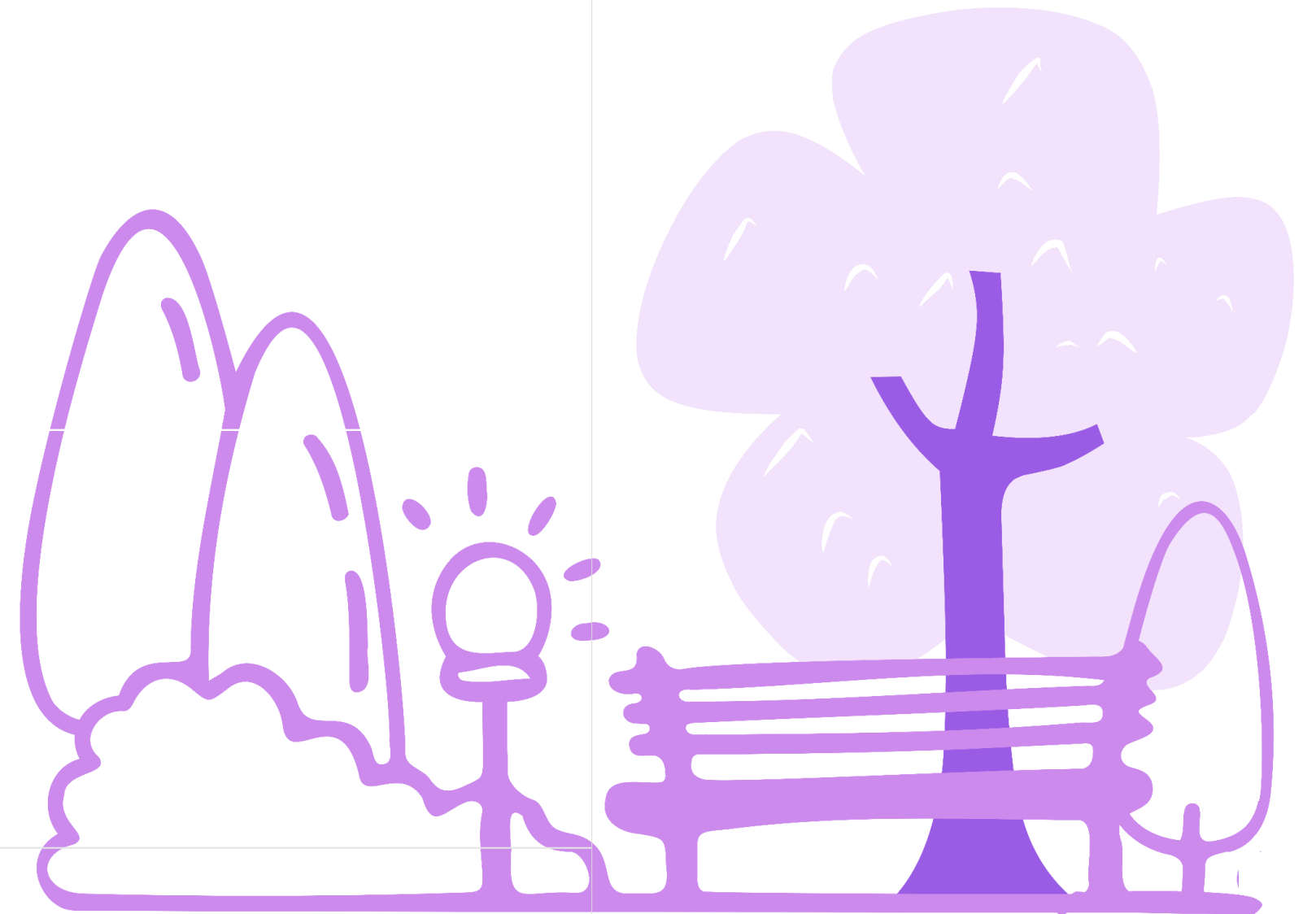
Virtual Community Engagement | March 27, 2025





Agenda

1. Summary/Project Goals
2. Survey Results
3. Draft Design Criteria
4. Funding
5. PARKnership
6. Next Steps
7. Q+A





Summary + Project Goals

- ▶ Opened in 2005, the Schuyler Hamilton Jones Skatepark is the City's first and only skatepark. It was developed with community support and shares a 4.3-acre lot with Lockett Field & Stadium
- ▶ The skatepark spans 12,000 square feet and includes various modular equipment, such as jumps, pipes, rails, wedges, and boxes
- ▶ The park is named in memory of Schuyler Hamilton Jones, known as Sky and Shaggy, a 16-year-old T.C. Williams High School student who passed away in 2003
- ▶ Seeking community feedback to plan future improvements and present Final Design Criteria at the Park and Recreation Commission



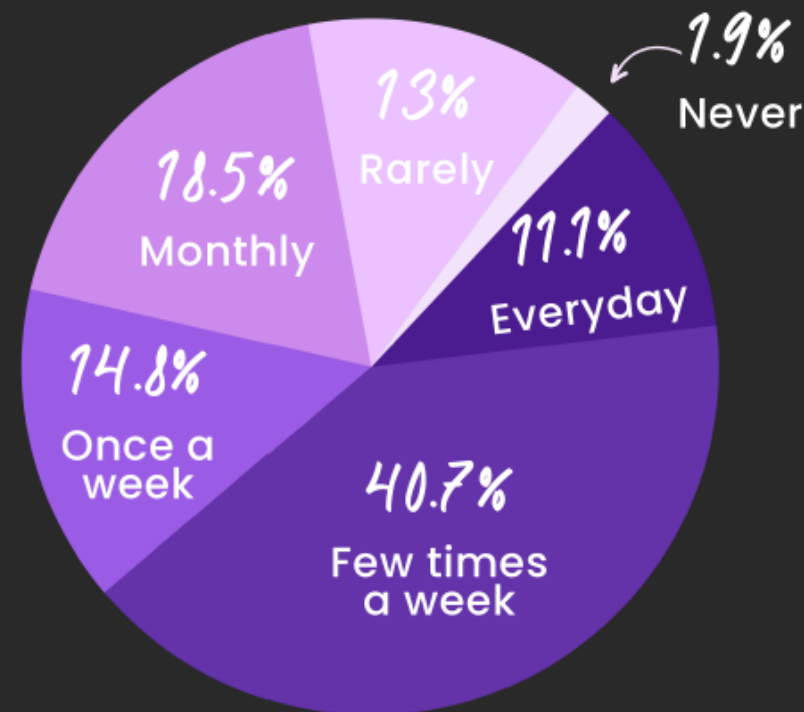


Survey Results Highlights

56
SURVEY
RESPONSES
FROM OCT 15-NOV 27, 2024



PARK USE **FREQUENCY**



Nearly 41% of survey respondents reported using the park a few times a week.



Survey Results Highlights

* PREFERRED STYLE OF SKATING

STREET (rails, boxes, pads) 40.7%

STREET, VERT, FLAT GROUND/FREESTYLE 44.4%



* SURVEY RESPONDENTS WOULD LIKE TO SEE:

85% lighting

64% seating

66% shade

45% water fountain

89% OF RESPONDENTS FEEL SAFE AT THE PARK



* from a multiple-choice option

Survey respondents *like* the parking/ability to get to the park (57%), skatepark elements (45%) & level of difficulty of the elements (32%).

Survey respondents do *not like* the layout of the elements (59%), surface materials (55%) & skatepark elements (37%).

Additionally, survey users mentioned the lack of shade, lack of lights, need for better flow & outdated design.



Survey Results Highlights

Short Term-Solutions



REPAIR AND REPLACE DAMAGED EQUIPMENT

Users pointed out the need to fix or replace broken elements like the green rails, flat bars, and half-pipe.



LIGHTING

Multiple respondents emphasized the need for proper lighting, especially to extend use into the evening & make the park safer at night.



ADDING SHADE

Some users proposed adding shade to make the park more comfortable, especially in hot weather.



INCREASE BEGINNER-FRIENDLY FEATURES

Some respondents recommended adding smaller street features like ledges, rails, and curbs, or redesigning for novice-friendly layouts.



ENHANCE SAFETY

Concerns about cars entering the park led to calls for better safety measures like barriers and a sidewalk for pedestrians.



IMPROVING FLOW AND LAYOUT

There were several suggestions to improve the layout for better flow by moving ramps and obstacles around, optimizing space, and removing unusable equipment.



Draft Design Criteria

Inclusive & Multi-Level Design

- Features for beginners, intermediate, and advanced skaters
- Separate areas for different skill levels to ensure safety
- Accessible design for adaptive skateboarding (wider ramps, smooth transitions)

Diverse Structures + Elements

- Street Section: Rails, ledges, stair sets, hubbas, manual pads
- Transition Section: halfpipes, quarterpipes, vertical walls

Good Flow & Connectivity

- Smooth transitions between different areas
- Avoid dead zones—keep the park dynamic and engaging
- Design for continuous movement

Safety Considerations

- Smooth edges on obstacles to minimize injuries
- Proper drainage to prevent puddles
- High-quality, smooth concrete to reduce friction and injuries
- Clearly marked areas for different skill levels

Aesthetic & Community Integration

- Permanent or temporary public art, seasonal arts programming, and local cultural influences
- Seating areas and shade for spectators and families
- Night lighting for extended hours
- Green spaces, trees, and eco-friendly design

Durability & Maintenance

- High-quality concrete for longevity and smoothness
- Easy maintenance for future repairs





Draft Design Criteria

Skate-Friendly Surroundings

- Connection to bike paths or public transportation

Adaptability for Events

- Areas for spectators to view
- Electrical outlets
- Adequate signage

Learning & Social Spaces

- Beginner-friendly instructional areas
- Signage with trick names, tips, and skatepark etiquette
- Community boards for local skate events and meet-ups





Funding

- ▶ Funding is **not currently approved** for the complete renovation of the park
- ▶ RPCA is **exploring options for quick, low, or no-cost interim improvements**
- ▶ **High-level estimates based on final criteria** will be created and used to inform future budget requests



PARKnership



Community Matching Fund Overview

- ▶ Supports community groups in enhancing parks, gardens, trails, and recreation facilities through funding partnerships
- ▶ Eligible projects include athletic field upgrades, park beautification, community gardens, playground renovations, and environmental initiatives

Who Can Apply & Requirements

- ▶ Open to community groups in Alexandria with projects in City-owned parks or facilities
- ▶ Must demonstrate how the project builds a stronger, healthier community
- ▶ Groups must raise matching funds within one year before implementation

Funding & Eligible Contributions

- ▶ Awards range from \$5,000 to \$50,000, covering up to 50% of project costs
- ▶ Matching funds can include cash donations, grants (non-city funded), in-kind labor, and professional services (up to 15% of the budget)
- ▶ All volunteer hours and contributions must be documented for City approval



Next Steps

MARCH

Community Pop-Up Meeting/Mobile Art Lab

- Saturday, March 29 from 11 a.m. to 1 p.m.
- Location: 3540-Wheeler Ave.

MAY

Virtual Community Meeting

- Wednesday, May 14, from 7-8 p.m.
- [Zoom Virtual Meeting](#)

Community Pop-Up Meeting

- Saturday, May 17 from 11 a.m.-1 p.m.
- Location: 3540-Wheeler Ave.

JUNE

Park and Recreation Commission





CITY OF ALEXANDRIA

Recreation, Parks & Cultural Activities

Q+A

<https://www.alexandriava.gov/parks/project/schuyler-hj-park-improvements>

Jose C. Ayala, BSP, CNUa
Principal Planner
Jose.Ayala@alexandriava.gov
Phone: 703.746.5491

